

Concerto I for Two Pianos by J.S. Bach *Arranged for Saxophone Choir*

The following pages contain the parts for an arrangement for a saxophone SAATB choir. This arrangement is for the accompanying parts to the pianos. The piano parts are not included.

IMPORTANT NOTE: This is a scan of hand-written parts. When printing, choose the option to "Fit to Printable Area" or "Shrink to Printable Area" to get all of the scanned area onto an 8.5x11 page.

Comments regarding the arrangement:

- The original key is preserved.
- While there are only 5 distinct parts (SAATB) with some divided sections, this works well with parts played by multiple players in a saxophone choir setting.

I've provided this arrangement free of charge. If you perform this piece, I'd appreciate hearing about it and if possible, I'd like to receive a copy of the program and a recording. I can be contacted at eddie@classicalsax.com

If you find any issues in the arrangement, please let me know so I can publish corrections.

Bb Soprano Sax Concerto I J.S. Bach

Allegro

Handwritten musical score for Bb Soprano Sax, Concerto I by J.S. Bach. The score is in 2/4 time, key of Bb major, and consists of 60 measures. It features various musical notations including eighth and sixteenth notes, rests, and dynamic markings like 'forte' and 'piano'. Measure numbers 5, 10, 15, 20, 25, 30, 35, 40, 45, 50, 55, and 60 are boxed and placed at the start of their respective lines.

Measures 1-5: **5** *Allegro*

Measures 6-10: **10**

Measures 11-15: **15** *forte*

Measures 16-20: **20** *piano* *forte* *piano*

Measures 21-25: **25** *forte*

Measures 26-30: **30**

Measures 31-35: **35** *forte*

Measures 36-40: **40**

Measures 41-45: **45** *piano*

Measures 46-50: **50** *forte* *piano*

Measures 51-55: **55** *forte* *piano*

Measures 56-60: **60** *forte*

Handwritten musical score for Bb Soprano, measures 65-110. The score is written on ten staves. It includes various musical notations such as notes, rests, and dynamic markings. Measure numbers 65, 70, 75, 80, 85, 90, 95, 100, 105, and 110 are boxed and placed above the staves. Dynamic markings include 'forte', 'piano', 'mezzo forte', and 'piano' with a 'tu' marking above a note at measure 80.

Transcribed by Eddie Jennings (e.jennings@computer.org)

01110000

Handwritten musical notation for the first line of 'The Rose Tree'. The notation is on a single staff with a treble clef and a 2/4 time signature. The melody is written in G major (one sharp). The notes are: G4 (quarter), A4 (quarter), B4 (quarter), A4-G4 (beamed eighth notes), F#4 (quarter), E4 (quarter), D4 (half). Above the staff, there is a handwritten '5' in a box.

Concerto I
J.S. Bach

Handwritten musical score for Bb Soprano, measures 10-110. The score is written on ten staves. Measures 10-20 are marked with box numbers 10, 15, and 20. Measures 25-30 are marked with box numbers 25, 30, 35, and 40. Measures 45-50 are marked with box numbers 45, 50, and 55. Measures 60-65 are marked with box numbers 60, 65, and 70. Measures 75-80 are marked with box numbers 75, 80, and 85. Measures 90-95 are marked with box numbers 90, 95, and 100. Measures 105-110 are marked with box numbers 105 and 110. The score includes dynamic markings: *forte* at measures 45, 50, 75, and 90; *piano* at measures 80 and 95. The notation includes various note values, rests, and bar lines.

Handwritten musical score for a single melodic line, likely for a soprano. The score is written on a single staff with a treble clef and a key signature of one sharp (F#). The tempo is marked *Andante*. The score is divided into measures, with measure numbers 115, 120, 125, 130, 135, 140, 145, 150, 155, 160, 165, 170, and 175 marked in boxes. The dynamics *forte* and *piano* are indicated. The score ends with a double bar line and a repeat sign.

Four empty musical staves, each consisting of five lines, provided for accompaniment or other parts.

E♭ Alto Sax I

Concerto I

J.S. Bach

Allegro

Handwritten musical score for E♭ Alto Sax I, Concerto I by J.S. Bach. The score is in treble clef, common time (C), and features a series of rapid sixteenth-note passages. It includes dynamic markings (piano, forte) and measure numbers (5, 10, 15, 20, 25, 30, 35, 40, 45, 50) in boxes. The piece concludes with a final measure marked '50'.

Handwritten musical score for Eb Alto I, measures 55-108. The score is written on ten staves. It features various musical notations including eighth and sixteenth notes, rests, and dynamic markings such as 'forte', 'piano', and 'mezzo forte'. Measure numbers 55, 60, 65, 70, 75, 80, 85, 90, 95, and 100 are boxed in the left margin. The key signature has one flat (Bb) and the time signature is 2/4.

mezzo forte

forte

105

110

Adagio

"pizzicato"

5

10

15

20

"coll'arco" 25

Handwritten musical score for a piece in E-flat major, 4/4 time. The score consists of four staves. The first staff begins with a treble clef, a key signature of one flat (B-flat), and a 4/4 time signature. The music is marked "pizzicato". The second staff has a box containing the number 30. The third staff continues the melody. The fourth staff ends with a double bar line and is marked "coll arco".

Allegro

Handwritten musical score for a piece in E-flat major, 2/4 time. The score consists of six staves. The first staff has a treble clef, a key signature of one flat (B-flat), and a 2/4 time signature. The music is marked "Allegro". The second staff has a box containing the number 5. The third staff has a box containing the number 10. The fourth staff has a box containing the number 15. The fifth staff has a box containing the number 20. The sixth staff has a box containing the number 25. The seventh staff has a box containing the number 30. The eighth staff has a box containing the number 35. The ninth staff has a box containing the number 40. The tenth staff has a box containing the number 45. The eleventh staff has a box containing the number 50. The twelfth staff has a box containing the number 55. The music is marked "piano" and "forte".

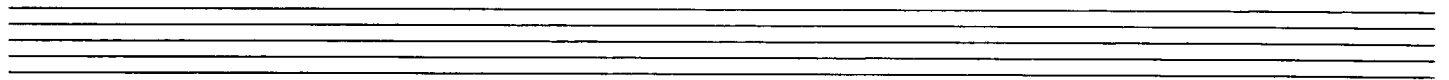
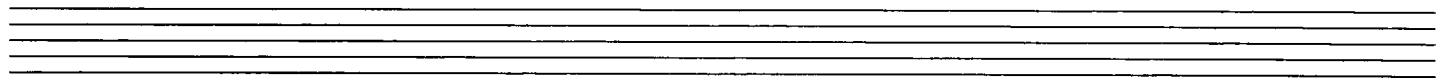
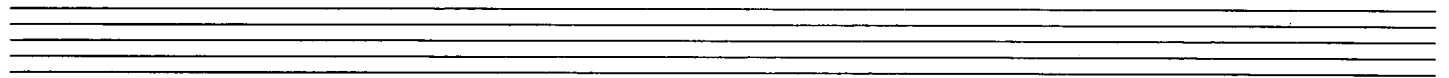
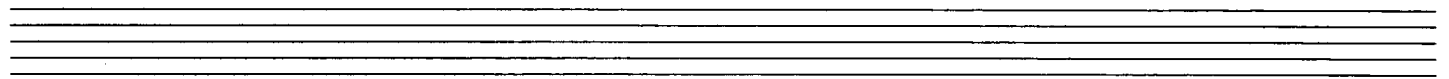
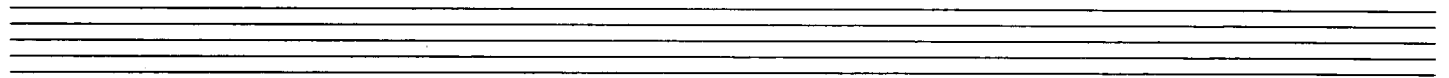
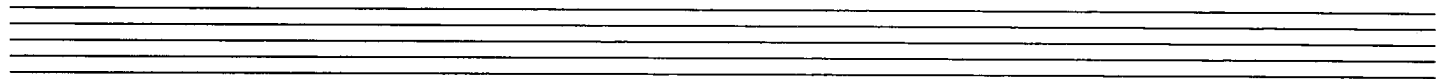
Handwritten musical score for Eb Alto I, measures 55-140. The score is written on ten staves. Measure numbers are boxed and placed at the beginning of each staff: 55, 60, 65, 70, 75, 80, 85, 90, 95, 100, 105, 110, 115, 120, 125, 130, 135, 140. Dynamic markings include *piano*, *forte*, and *f*. The key signature is one flat (Bb). The time signature is 4/4. The notation includes various note values, rests, and slurs.

Eb Alto I

- Pg 5 -

Concerto I
J.S. Bach

Handwritten musical score for Eb Alto I, measures 145-175. The score is written on five staves in treble clef. Measure 145 is marked with a box containing '145'. Measure 150 is marked with a box containing '150'. Measure 155 is marked with a box containing '155'. Measure 160 is marked with a box containing '160'. Measure 165 is marked with a box containing '165'. Measure 170 is marked with a box containing '170'. Measure 175 is marked with a box containing '175'. The score includes dynamic markings: 'piano' at measures 145, 150, and 160; 'forte' at measures 155, 160, and 170. The score includes various musical notations: eighth notes, sixteenth notes, quarter notes, half notes, and whole notes. There are also rests, accidentals (sharps and flats), and a double bar line at the end of measure 175.



E♭ Alto Sax II

Concerto I

J.S. Bach

Allegro

Handwritten musical score for E♭ Alto Sax II, Concerto I, J.S. Bach. The score is written on ten staves in treble clef with a common time signature (C). It includes various musical notations such as eighth and sixteenth notes, rests, and dynamic markings. Measure numbers 5, 10, 15, 20, 25, 30, 35, 40, 45, and 50 are boxed and placed at the beginning of their respective staves. Dynamic markings include 'piano', 'forte', and 'piano' with a fermata. A trill is marked with 'tr' and a sharp sign in measure 11. The key signature changes from one flat (B♭) to two sharps (F# and C#) starting at measure 45.

Handwritten musical score for Eb Alto II, measures 53-100. The score is written on ten staves in treble clef with a key signature of one flat (Bb). It includes various musical notations such as notes, rests, and dynamic markings. Measure numbers 53, 60, 65, 70, 75, 80, 85, 90, 95, and 100 are boxed in the right margin. Dynamic markings include 'piano', 'forte', 'mezzo forte', and '(piano)'. There are also some handwritten annotations like 'ti' above measure 80 and '(b)' below measure 75.

105

f

110

Adagio *pizzicato*

5

10

15

20

"coll arco" 25

"pizzicato"

30

35

Transcribed by Eddie Jennings (e.jennings@computer.org)

coll arco

Allegro

piano

forte

piano

piano

forte

El Año II

- P 4 -

Concerto I
J.S. Bach

Handwritten musical score for a piece in E-flat major, Op. 5, No. 5, by J.S. Bach. The score consists of 15 staves of music. The key signature has two flats (B-flat and E-flat). The time signature is 3/4. The score includes various musical notations such as notes, rests, and dynamic markings like 'piano', 'forte', and 'div'. Measure numbers 65 through 150 are boxed and placed above the staves. The piece concludes with a double bar line and a repeat sign.

Handwritten musical notation on a single staff, featuring various notes, rests, and dynamic markings. The notation includes measures 153, 160, 165, and 170, with dynamic markings "piano" and "forte".

Seven empty musical staves for notation.

Bb Tenor Sax Concerto I J.S. Bach

Allegro

Handwritten musical score for Bb Tenor Sax, Concerto I by J.S. Bach. The score is written on ten staves in treble clef with a key signature of one flat (Bb) and a common time signature (C). The tempo is marked 'Allegro'. The score includes various musical notations such as notes, rests, and dynamic markings. Boxed numbers 5, 10, 15, 20, 25, 30, 35, 40, 45, 50, and 55 are placed at the beginning of certain staves. Dynamic markings include 'forte' and 'piano'.

Staff 1: (6) 5

Staff 2: 10 piano

Staff 3: 15 forte piano forte

Staff 4: 20 forte piano

Staff 5: 25 forte piano

Staff 6: 30 forte piano

Staff 7: 35 forte

Staff 8: 40 piano

Staff 9: 45 piano

Staff 10: 50 forte piano

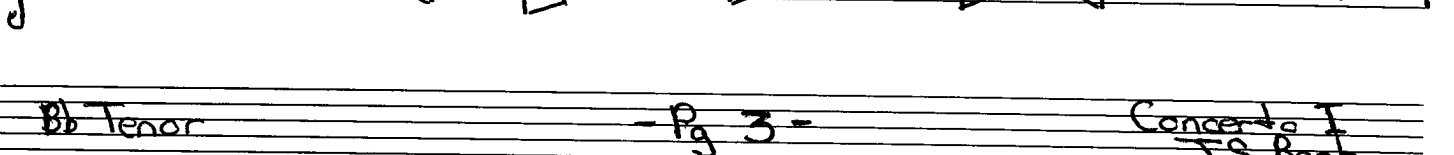
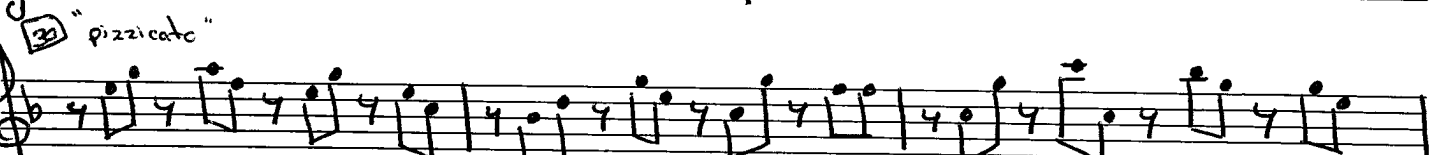
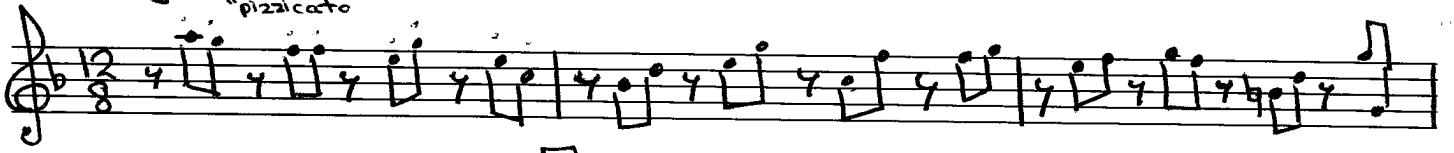
Staff 11: 55 forte piano

Handwritten musical score for Bb Tenor, measures 60-105. The score is written on ten staves. It includes various musical notations such as notes, rests, and dynamic markings. The dynamics include forte, piano, mezzo forte, and piano. Measure numbers 60, 65, 70, 75, 80, 85, 90, 95, 100, and 105 are boxed and placed at the beginning of their respective staves. The key signature has two flats (Bb and Eb).



Adagio

"pizzicato"



Bb Tenor

- Pg 3 -

Concerto I
J.S. Bach

Handwritten musical notation for the first system, featuring two staves. The first staff contains a series of eighth and sixteenth notes. The second staff includes a measure with a fermata and the handwritten instruction "cellarac" above it.

Allegro

Handwritten musical notation for the second system, consisting of eight staves. The notation includes various musical symbols such as notes, rests, and dynamic markings. Boxed numbers (5, 10, 15, 20, 25, 30, 35, 40, 45, 50, 55, 60, 65) are placed above the staves to indicate measure numbers. Dynamic markings include "piano" and "forte".

Handwritten musical score for Bb Tenor, measures 70-145. The score is written on ten staves. It includes various musical notations such as notes, rests, and dynamic markings like "piano" and "forte". Measure numbers are boxed and placed above the staves.

Measures 70-75: Treble clef, key signature of B-flat. Measure 70 starts with a piano dynamic. Measure 75 has a key signature change to B-flat.

Measures 80-85: Treble clef, key signature of B-flat. Measure 80 has a piano dynamic. Measure 85 has a key signature change to B-flat.

Measures 90-95: Treble clef, key signature of B-flat. Measure 90 has a piano dynamic. Measure 95 has a key signature change to B-flat.

Measures 100-105: Treble clef, key signature of B-flat. Measure 100 has a piano dynamic. Measure 105 has a key signature change to B-flat.

Measures 110-115: Treble clef, key signature of B-flat. Measure 110 has a piano dynamic. Measure 115 has a key signature change to B-flat.

Measures 120-125: Treble clef, key signature of B-flat. Measure 120 has a piano dynamic. Measure 125 has a key signature change to B-flat.

Measures 130-135: Treble clef, key signature of B-flat. Measure 130 has a piano dynamic. Measure 135 has a key signature change to B-flat.

Measures 140-145: Treble clef, key signature of B-flat. Measure 140 has a piano dynamic. Measure 145 has a key signature change to B-flat.

Handwritten musical notation on three staves. The notation includes measures with notes, rests, and dynamic markings. Measure numbers 150, 155, 160, 165, and 170 are indicated in boxes above the staves. The word "forte" is written below the second staff. The notation ends with a double bar line and a decorative flourish.

Eight empty musical staves for notation.

E♭ Baritone Sax

Concerto I

J.S. Bach

Allegro

Handwritten musical score for E♭ Baritone Sax, Concerto I by J.S. Bach. The score is written on ten staves in treble clef with a common time signature (C). It includes various musical notations such as notes, rests, and dynamic markings like "forte" and "piano". Measure numbers 5, 10, 15, 20, 30, 35, 40, 45, and 50 are marked in boxes. The tempo is marked "Allegro".

Handwritten musical score for Eb Baritone, Concerto I by J.S. Bach. The score consists of 11 staves of music. Measure numbers are indicated in boxes: 55, 60, 65, 70, 75, 80, 85, 90, 95, 100. Dynamics include forte, piano, mezzo forte, and accents.

Staff 1: forte, piano, 55

Staff 2: 60

Staff 3: forte, 65

Staff 4: piano, 70

Staff 5: forte, 75

Staff 6: piano, forte, 80

Staff 7: piano, forte, piano, 85

Staff 8: piano, 90

Staff 9: mezzo forte, forte, piano, 95

Staff 10: mezzo forte, piano, 100

105

mezzo forte

forte

110

Adagio

"pizzicato"

5

10

15

20

25

"sempre pizzicato"

"pizzicato"

30

35

"coll'arco"

Allegro

5

10

15

20

25

30

35

40

45

piano

forte

piano

Handwritten musical score for Baritone, measures 50-135. The score is written on ten staves. It includes various musical notations such as notes, rests, and dynamic markings like "piano" and "forte". Measure numbers are boxed and placed at the beginning of each staff.

Measures 50-59: Staff 1. Measure 50 starts with a treble clef and a key signature of one sharp (F#). Measure 59 ends with a double bar line.

Measures 60-69: Staff 2. Measure 60 starts with a treble clef and a key signature of one sharp (F#). Measure 69 ends with a double bar line.

Measures 70-79: Staff 3. Measure 70 starts with a treble clef and a key signature of one sharp (F#). Measure 79 ends with a double bar line.

Measures 80-89: Staff 4. Measure 80 starts with a treble clef and a key signature of one sharp (F#). Measure 89 ends with a double bar line.

Measures 90-99: Staff 5. Measure 90 starts with a treble clef and a key signature of one sharp (F#). Measure 99 ends with a double bar line.

Measures 100-109: Staff 6. Measure 100 starts with a treble clef and a key signature of one sharp (F#). Measure 109 ends with a double bar line.

Measures 110-119: Staff 7. Measure 110 starts with a treble clef and a key signature of one sharp (F#). Measure 119 ends with a double bar line.

Measures 120-129: Staff 8. Measure 120 starts with a treble clef and a key signature of one sharp (F#). Measure 129 ends with a double bar line.

Measures 130-135: Staff 9. Measure 130 starts with a treble clef and a key signature of one sharp (F#). Measure 135 ends with a double bar line.

Handwritten musical score for Eb Baritone, measures 140-175. The score is written on a single staff in treble clef. It begins with a key signature of one flat (Bb) and a common time signature (C). The music is characterized by rapid sixteenth-note passages and some rests. Dynamic markings include 'piano' at measures 140 and 145, and 'forte' at measure 155. Measure numbers 140, 145, 150, 155, 160, 165, 170, and 175 are boxed and placed above the staff. The piece concludes with a double bar line and a final flourish. Below the main staff, there are five sets of empty five-line staves.

Eb Baritone

- Pg 6 -

Concerto I
J.S. Bach